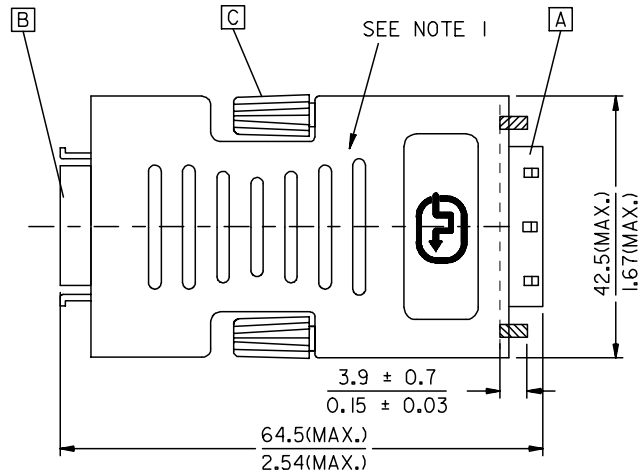
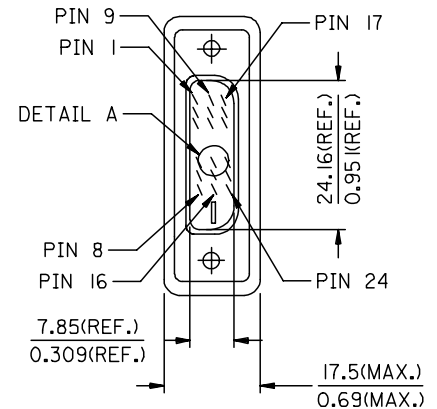


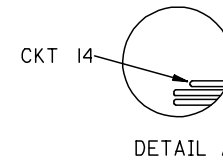
DFP(F)



BACK SIDE



DVI_D(M)



DETAIL A

ENTER DESCRIPTION EC NO: DG2006-0186 DRWN:PDAI 2006/03/09 CHKD: 2006/03/09 APPR:TKAN 2006/03/10	QUALITY SYMBOLS = 0 = 0.05	GENERAL TOLERANCES (UNLESS SPECIFIED)		DIMENSION STYLE MM/IN		SCALE ---	DESIGN UNITS METRIC	THIRD ANGLE PROJECTION																															
		<table border="1"> <thead> <tr> <th></th> <th>mm</th> <th>INCH</th> </tr> </thead> <tbody> <tr> <td>4 PLACES</td> <td>± ---</td> <td>± ---</td> </tr> <tr> <td>3 PLACES</td> <td>± ---</td> <td>± ---</td> </tr> <tr> <td>2 PLACES</td> <td>± ---</td> <td>± ---</td> </tr> <tr> <td>1 PLACE</td> <td>± ---</td> <td>± ---</td> </tr> </tbody> </table>		mm	INCH	4 PLACES	± ---	± ---	3 PLACES	± ---	± ---	2 PLACES	± ---	± ---	1 PLACE	± ---	± ---	<table border="1"> <thead> <tr> <th>DRAWN BY</th> <th>DATE</th> <th>TITLE</th> </tr> </thead> <tbody> <tr> <td>PDAI</td> <td>2006/03/07</td> <td>DVI_D(M)-DFP(F) ADAPTER</td> </tr> <tr> <td>CHECKED BY</td> <td>DATE</td> <td></td> </tr> <tr> <td>ZXDENG</td> <td>2006/03/07</td> <td></td> </tr> <tr> <td>APPROVED BY</td> <td>DATE</td> <td></td> </tr> <tr> <td>BORON</td> <td>2006/03/07</td> <td></td> </tr> </tbody> </table>	DRAWN BY	DATE	TITLE	PDAI	2006/03/07	DVI_D(M)-DFP(F) ADAPTER	CHECKED BY	DATE		ZXDENG	2006/03/07		APPROVED BY	DATE		BORON	2006/03/07		MOLEX INCORPORATED		SHEET NO. 1 OF 2
		mm	INCH																																				
	4 PLACES	± ---	± ---																																				
3 PLACES	± ---	± ---																																					
2 PLACES	± ---	± ---																																					
1 PLACE	± ---	± ---																																					
DRAWN BY	DATE	TITLE																																					
PDAI	2006/03/07	DVI_D(M)-DFP(F) ADAPTER																																					
CHECKED BY	DATE																																						
ZXDENG	2006/03/07																																						
APPROVED BY	DATE																																						
BORON	2006/03/07																																						
	DRAFT WHERE APPLICABLE MUST REMAIN WITHIN DIMENSIONS		MATERIAL NO. 88741-8800	DOCUMENT NO. SD-88741-009																																			
	THIS DRAWING CONTAINS INFORMATION THAT IS PROPRIETARY TO MOLEX INCORPORATED AND SHOULD NOT BE USED WITHOUT WRITTEN PERMISSION																																						

NOTE:1. MOLD WITH SNOW WHITE PVC RESIN 887800077 FOR ADAPTOR COVER.

2. DVI CONNCETOR SPECIFICATION

2.1 REFER TO PRODUCT SPEC. PS74320-0001.

2.2 CONTACT PLATING: AU FLASH.

3. ELECTRICAL PERFORMANCE

3.1 INSULATION RESISANCE: 20M Ohms Min

3.2 DIELECTRIC STRENGTH: 300V DC FOR 10 MILLISECONDS.

4. ADAPTOR SPECIFICATION

4.1 REFER TO PRODUCT SPEC. PS88741-8800.

5. THIS PRODUCT MUST MEET MX RoHS COMPLIANCE.

6. CONNECTION DIAGRAM

SHIEDL	SHIELD	GROUND
PIN 6	PIN 24	TMDS CLOCK-
PIN 5	PIN 23	TMDS CLOCK+
PIN 4	PIN 22	TMDS CLOCK SHIELD
PIN 14	PIN 19	TMDS DATA 0 SHIELD
PIN 15	PIN 18	TMDS DATA 0+
PIN 16	PIN 17	TMDS DATA 0-
PIN 18	PIN 16	HOT PLUG DETECT
PIN 7	PIN 15	GROUND(+5V & HV SYNC.)
PIN 8	PIN 14	POWER +5V
PIN 3	PIN 11	TMDS DATA 1 SHIELD
PIN 1	PIN 10	TMDS DATA 1+
PIN 2	PIN 9	TMDS DATA 1-
PIN 19	PIN 7	DDC DATA
PIN 20	PIN 6	DDC CLOCK
PIN 13	PIN 3	TMDS DATA 2 SHIELD
PIN 11	PIN 2	TMDS DATA 2+
PIN 12	PIN 1	TMDS DATA 2-
DFP(F)	DVI_D	CABLE FUNCTION

7. MATERIAL LIST

ITEM	DESCRIPTION
D	DFP CONNECTOR FEMALE SCREW 887806063
C	SCREW (FOR COVER) 887806003
B	DFP FEMALE CONNECTOR 887899292
A	DVI_D SINGLE CHANNEL G/F CONNECTOR 743230001

ENTER DESCRIPTION EC NO: DG2006-0186 DRWN:PDAI 2006/03/09 CHKD: 2006/03/09 APPR:TKAN 2006/03/10 REV	QUALITY SYMBOLS	GENERAL TOLERANCES (UNLESS SPECIFIED)	DIMENSION STYLE	SCALE	DESIGN UNITS	THIRD ANGLE PROJECTION															
	▽=0 ▽=0	<table border="1"> <tr><th></th><th>mm</th><th>INCH</th></tr> <tr><td>4 PLACES</td><td>±---</td><td>±---</td></tr> <tr><td>3 PLACES</td><td>±---</td><td>±---</td></tr> <tr><td>2 PLACES</td><td>±---</td><td>±---</td></tr> <tr><td>1 PLACE</td><td>±---</td><td>±---</td></tr> </table> ANGULAR ±---°		mm	INCH	4 PLACES	±---	±---	3 PLACES	±---	±---	2 PLACES	±---	±---	1 PLACE	±---	±---	MM/IN	---	METRIC	
		mm	INCH																		
	4 PLACES	±---	±---																		
3 PLACES	±---	±---																			
2 PLACES	±---	±---																			
1 PLACE	±---	±---																			
	DRAFT WHERE APPLICABLE MUST REMAIN WITHIN DIMENSIONS	DRAWN BY PDAI DATE 2006/03/07 CHECKED BY ZXDENG DATE 2006/03/07 APPROVED BY BORON DATE 2006/03/07 MATERIAL NO. 88741-8800 DOCUMENT NO. SD-88741-009	TITLE																		
						DVI_D(M)-DFP(F) ADAPTER MOLEX INCORPORATED SHEET NO. 2 OF 2															